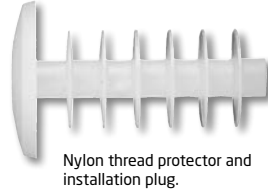
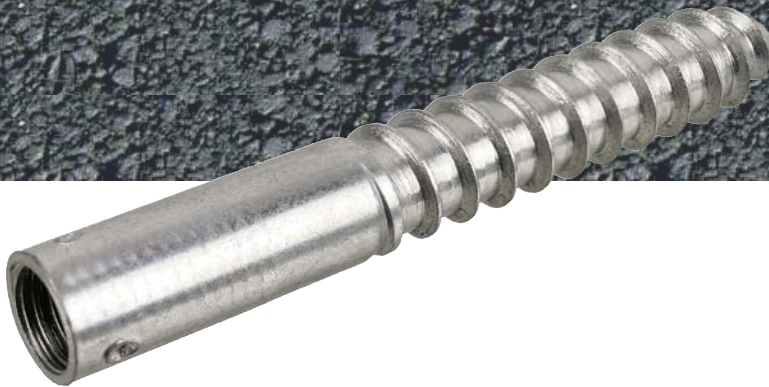


ASPHALT FIXING CHEMBOLT™

ICCONS®
Serious Connections



Nylon thread protector and installation plug.

ICCONS® Chembolt™ Asphalt Fixing is an intuitive system for creating a removable or permanent fixing. Primarily designed for tarmac and asphalts, **Chembolt™** is also suitable for solid concrete substrates. **Chembolt™** does not impart stress forces to its surroundings during installation therefore is totally durable as the integrity of the substrate is left intact.

Used with **ICCONS® BIS-V**, the **Chembolt™** Asphalt Fixing provides a great solution for permanent or temporary installations and the fixing hole itself can be used many times without disturbing the anchoring, or its durability.



- Fixing point re-usable with full strength
- Fully installed in minutes
- Clean and tidy
- The solution for a temporary fixing
- Strength of tarmac & asphalt is fully maintained
- Roads, Car parks, Playgrounds, Industrial, Home.
- For use with **ICCONS® BIS-V**



Adhesive

DATA SHEET

Suggested specification

ICCONS - Chembolt™
Part # - CBA10070
CBA10100
CBA12070
CbA12100


To be installed in accordance with ICCONS Installation Instructions.

Page 1 of 2

Document #

2006.3



| General Information | | Drill Dia (mm) | Hole Depth (mm) | Internal Thread Size |  qty |
|---------------------|------------------------------------|----------------|-----------------|----------------------|---|
| Carbon Steel Part # | Description | | | | |
| CBA10070 | M10 x 70mm asphalt fixing (08116) | 14 | 75 | M10 | 50 |
| CBA10100 | M10 x 100mm asphalt fixing (08117) | 14 | 105 | M10 | 50 |
| CBA12070 | M12 x 70mm asphalt fixing (08118) | 16 | 75 | M12 | 50 |
| CBA12100 | M12 x 100mm asphalt fixing (08119) | 16 | 105 | M12 | 50 |

PERFORMANCE - when used with ICCONS® BIS-V Injection Adhesive

TENSION

| Part # | Drill Dia (mm) | Hole Depth (mm) | Internal Thread Size | Ultimate Load Capacity (kN) in Asphalt* | Design load capacity N_{rd} (kN) in 32MPa Concrete # |
|----------|----------------|-----------------|----------------------|---|--|
| CBA10070 | 14 | 75 | M10 | Up to 10kN | 21.8 kN |
| CBA10100 | | 105 | | Up to 18kN | |
| CBA12070 | 16 | 75 | M12 | Up to 10kN | 22.4 kN |
| CBA12100 | | 105 | | Up to 18kN | |

Notes : * The above loads for Asphalt are indication loads and depend mostly on the quality of the asphalt.

Loads in kN for a single anchor in Non-Cracked Concrete with out edge or spacing influences.

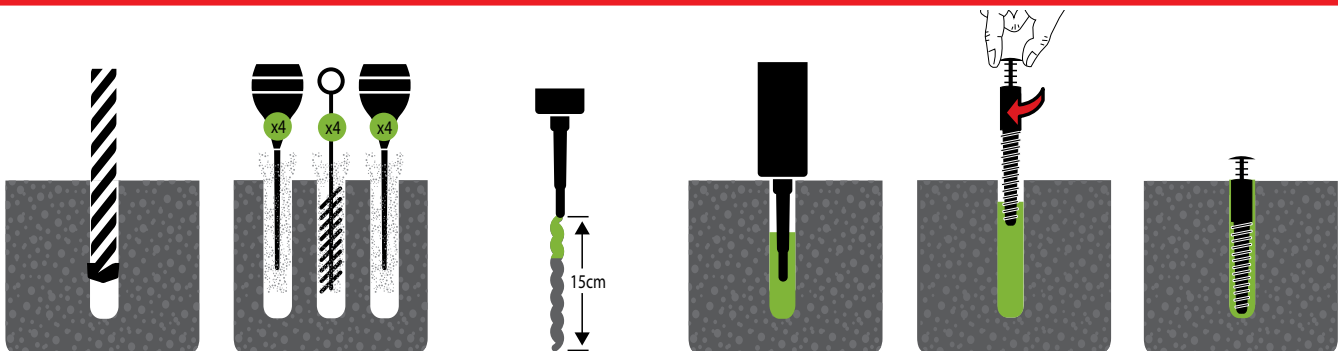
Design load capacity (N_{rd}) incorporates safety factor $\phi = 0.6$ concrete, $\phi = 0.8$ steel.

Email engineering@iccons.com.au for further technical assistance.

Material Specification

| | |
|--------------|---|
| Product Type | Chembolt Asphalt Fixing - Threaded insert adhesive fixing |
| Bolt | Class 4.6 |
| Coating | Zinc Clear |

Installation



- Hole preparation should be to correct diameter and depth.
- Clean out hole thoroughly of dust and spoil by repeat blowing and brushing action.
- Unscrew Cap and screw on mixing nozzle supplied and place in suitable applicator tool.
- For new cartridges dispense a bead of adhesive until even and consistent colour is present to ensure correct mix of adhesive.
- Place nozzle to the rear of the hole and pump adhesive whilst slowly withdrawing the nozzle back, avoid creating air pockets and fill the hole at least half full.
- Install dust cap into the Chembolt.
- Push the Chembolt into the adhesive while turning one way slowly until correct embedment depth is reached and some adhesive has flowed to the top of the hole. Always ensure the Chembolt is clean and free from oil, grease and dirt.
- Wipe away any excess adhesive from the top of the anchor
- Once installed, leave dust cap inserted until ready to install bolt, do not touch or load the anchor until the adhesive is fully cured. (See appropriate adhesive label for curing times).

